

SANTA CLARA HOMES

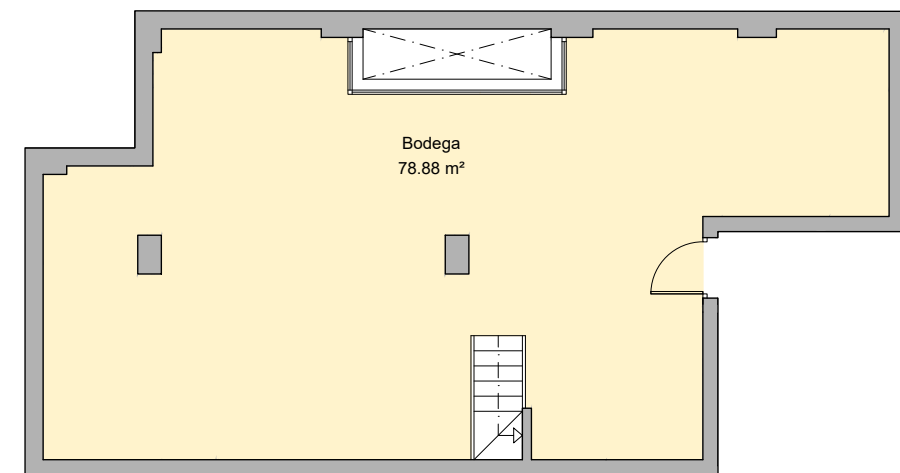
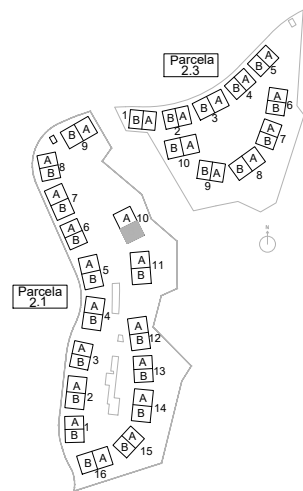
MARBELLA. MÁLAGA

PARCELA 2.1

PORTAL 10 / PLANTA BAJA

PUERTA B

| | SUP. ÚTIL INT/EXT | |
|----------------------|-----------------------|-----|
| Recibidor | 5.41 m ² | int |
| Cocina | 10.79 m ² | int |
| Espacio Homes | 1.55 m ² | int |
| Salón-Comedor | 33.03 m ² | int |
| Escalera | 3.88 m ² | int |
| Aseo | 2.07 m ² | int |
| Dormitorio principal | 23.59 m ² | int |
| Dormitorio 2 | 16.64 m ² | int |
| Dormitorio 3 | 11.92 m ² | int |
| Dormitorio 4 | 12.05 m ² | int |
| Baño principal | 8.74 m ² | int |
| Baño 2 | 4.03 m ² | int |
| Baño 3 | 4.77 m ² | int |
| Baño 4 | 4.77 m ² | int |
| Distribuidor | 6.90 m ² | int |
| Bodega | 78.88 m ² | int |
| Porche | 81.70 m ² | ext |
| Terraza | 6.69 m ² | ext |
| Piscina | 11.64 m ² | ext |
| Jardín | 273.87 m ² | ext |



| | |
|--|-----------------------|
| Superficie útil interior. | 229.02 m ² |
| Superficie construida interior. | 265.62 m ² |
| Superficie total construida (con zzcc sin terrazas ni jardines). | 285.81 m ² |
| Superficie construida de terraza. | 89.11 m ² |
| Superficie util S/Decreto 218/2005 del BOJA | 251.92 m ² |
| Superficie construida S/Decreto 218/2005 del BOJA | 348.66 m ² |

